

## HOW YOU CAN HELP!

Many hands make light work! The more parents that are members of the P&C, the more we can share ideas and tasks. **Team work makes the dream work!** The more people that collaborate, the more events we can run.

- Maybe you are really good at social media posts and you could manage that area?
- Maybe you are really good at calling people to ask for donations- just one or two calls a week?
- Maybe you are an administration wizard and you like writing letters or could put together our news for the school newsletter?
- Maybe you have a head for numbers and want to help with the financials or uniform shop?
- Maybe you are available to pick up some donations throughout the year?
- Or maybe, just maybe, you are an events coordinator and want to help out at discos or squirting children with coloured powder at the fun run!

.....

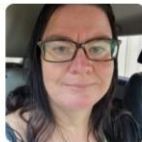
### EXECUTIVE COMMITTEE 2022/23



**PRESIDENT**  
Lisa Appleby



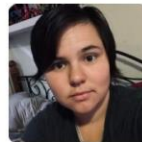
**VICE PRESIDENT**  
Jane Burnett



**EXECUTIVE MEMBER**  
Shiloh Smith-Ince



**EXECUTIVE MEMBER**  
Tarnya Irving



**EXECUTIVE MEMBER**  
Mikalah Hall



**SECRETARY & COMMUNITY REPRESENTATIVE**  
Pip Brennan



**TREASURER**  
Maria Maddalena



**EXECUTIVE MEMBER & BOOK CLUB COORDINATOR**  
Candice Yappo

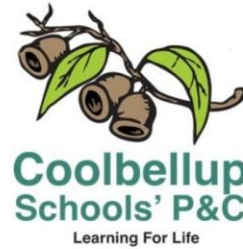
#### GET IN TOUCH WITH US....

**Lisa Appleby** 0406 635 329  
**Jane Burnett** 0402 245 889



Coolbellup Community School  
& Learning Centre P&C

coolbelluppc@outlook.com



## COOLBELLUP COMMUNITY SCHOOL & COOLBELLUP LEARNING CENTRE

### PARENTS & CITIZENS ASSOCIATION

There are two schools located on our campus at 15 Waverley Road, Coolbellup but our P&C is combined, working to support both the Coolbellup Community School and the Coolbellup Learning Centre.

The P&C consists of individual parents and carers of students enrolled in both schools. We also have a representative from the Coolbellup Community Association on the committee. This helps to strengthen our relationships within our wider community and gives us opportunities to collaborate on community events.

Anyone can join the P&C at any time during the school year. The annual joining fee is \$1 which is paid when you attend your first meeting.

